

Leicester City Council's Salix Programme Newsletter



Late March 2022

Welcome to the late March edition of the Salix Programme newsletter. This time we show you how one school is already reaping the benefits of their new LED lighting, check out progress at sites across Leicester, and we are asking for your suggestions!

Dynamat2050: Energy savings and carbon reduction data

Our corporate estate and a number of our schools are part of the city council's Built Environment School Service (BESS) programme, and therefore have access to the Dynamat2050 software to empower staff and their students to take control of their energy and water use.

Using this software, we can monitor to see if technologies installed under the Salix programme are matching predicted reductions at some city schools. For schools not in BESS Energy we monitor via billing data.

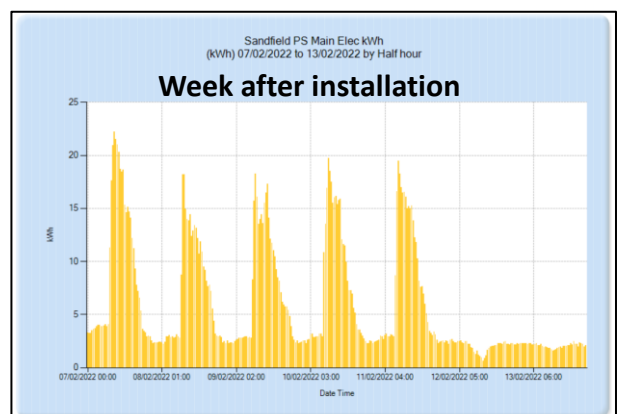
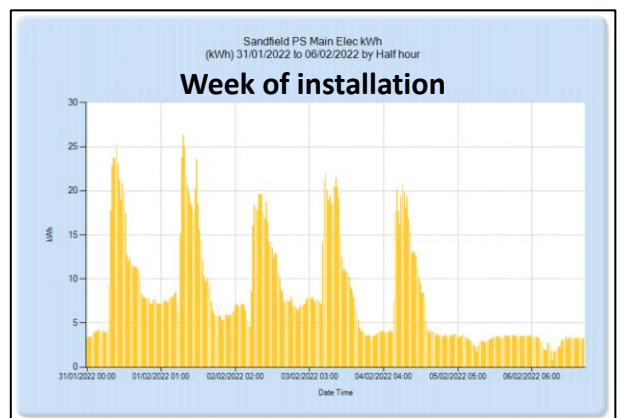
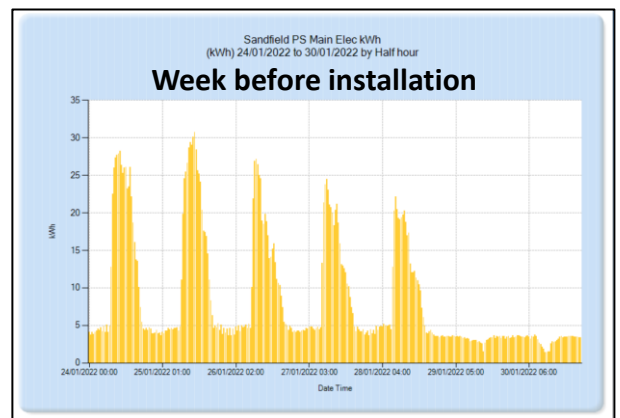
Sandfield Close Primary School

Additional LED lighting was installed at Sandfield Close Primary School between 31st January and 6th February this year. Using data from Dynamat, we can already see what a difference the new lighting has made on the school's electricity consumption. See the table showing the week before, during, and after installation.

Date	Electricity Consumption	Carbon emissions
24/01/2022 – 30/01/2022	2868 kWh	602.6 kg
31/01/2022 – 06/02/2022	2754 kWh	578.7 kg
07/02/2022 – 13/02/2022	1987 kWh	417.5 kg

In this three week time period from the table, Sandfield Close Primary School has saved 881kWh of electricity, which is over a third of their consumption prior to installation. Their weekly carbon footprint has reduced by 185.1kg of carbon since installing more efficient lighting across the building. The school is currently having solar PV panels installed, which will help to reduce their carbon footprint even further.

Over a year this would amount around 7.40 tCO₂e (tonnes of CO₂ equivalent) saved.



Heating controls surveys

Metric Services have been appointed to undertake a review of the heating controls at all school and non-school Salix project sites which are not receiving air source heat pumps under this first phase of the decarbonisation scheme. This will be in the form of a "Health Check" to ensure equipment is operating as it should, and whilst on site, surveyors will be looking at the potential for improvements or opportunities for further investment. We may also be able to establish if any responsible persons need further support or training in the operation of their heating systems.

The purpose is to make sure that heating systems are working efficiently and that settings are in line with current guidelines and Leicester City Council's Heating Policies. It is also an opportunity for the site to raise any issues they have with the operation of their heating system controls. As part of the process, the city council will be able to capture a list of controls currently in service and establish if these are still supported and/or serviceable.

Metric Services, or their representative, will be getting in touch directly with school/building staff to arrange an initial survey. On smaller systems this may be the extent of the works but larger sites may require multiple visits.

On the day, access to the plant rooms will be required, along with any computer based BEMS (Building Energy Management Systems). Ideally, surveyors will require input from the sites' responsible person which may be the Premises Officer, Business Manager or Site Manager.

Resources for schools

We welcome your thoughts!

The Salix and Eco-Schools teams would like to ask our school sites for suggestions on the types of resources that you would find helpful, to help educate pupils, staff and the wider school community on the benefits of the decarbonisation works taking place.

We are currently in the process of putting together a PowerPoint presentation which explains the various forms of decarbonisation technologies, which can be amended to match the technologies being installed at your school. We welcome your thoughts on further resources that you would find useful, such as lesson plans, assemblies and activity packs.

Please get in touch via email to let us know what types of resources your school would benefit from. Email us: Salix.Project.Team@leicester.gov.uk

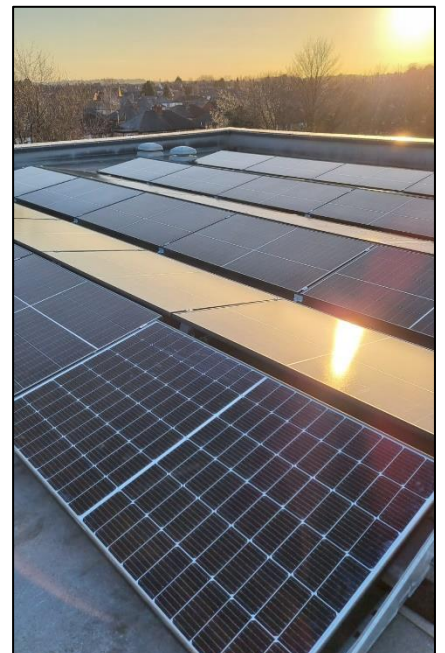


Completed works

St Mary's Fields Primary School has recently had new windows installed, and the installation of solar PVs is in progress. The school has already noticed a difference inside the school building as their new windows help to retain temperatures within the building, and also provide a level of soundproofing. This will help St Mary's Fields Primary School in reducing their heating bills, as less heat is being lost through these new, efficient windows. See their new windows below.



Energy Saving Lighting (ESL) are currently working to install solar PVs on the roof of St Mary's Fields School building. Here are some fantastic pictures of the panels installed so far.



Completed works

Solar PV's

Blue Sun Energy has recently completed the installation of solar PVs at Cossington street Gym. The solar panels will help them to generate their own electricity, reducing their electricity consumption from the grid, which will save money on their energy bills.



Netherhall Road Community Home has also had their new solar PV panels fitted by Blue Sun Energy.



If you would like to share any feedback on project progress at your site, please get in touch using the email address below. Additionally, if your site will be receiving new windows as part of the Salix funded works, we would be grateful if you could send us some photos of your existing windows.

Contact us

Each site has a dedicated project manager (Alan Evans or John Squires), however if you have a general question or need to get in touch with the Salix Project Team email us at Salix.Project.Team@leicester.gov.uk