

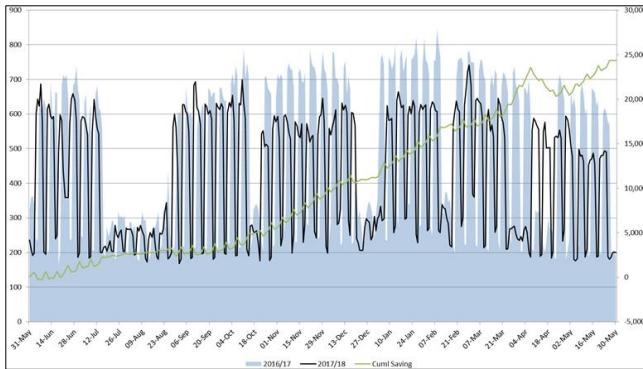
Salix Finance – Case Studies

LED light replacement schemes

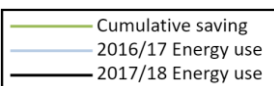
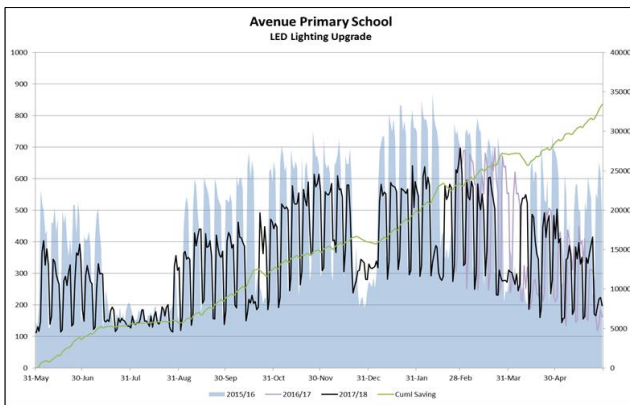
Several schools in the city have independently applied for Salix Finance. This has been done though obtaining several quotes to compare value for money and quality. Leicester City Council has supported with energy data prior to application.

All these schools, with the support of their respective governing body, applied for funding to cover LED lights installations. Payback must take less than 8 years. Once payback has been completed, schools are able to reap the financial benefits to spend on other priorities, meanwhile having the benefits of better light in classrooms, little or no maintenance costs and reducing energy while energy costs continue to increase.

Spinney Hill Primary School

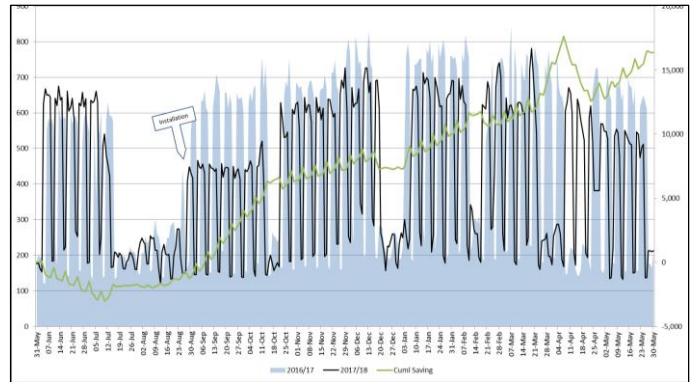


Avenue Primary School



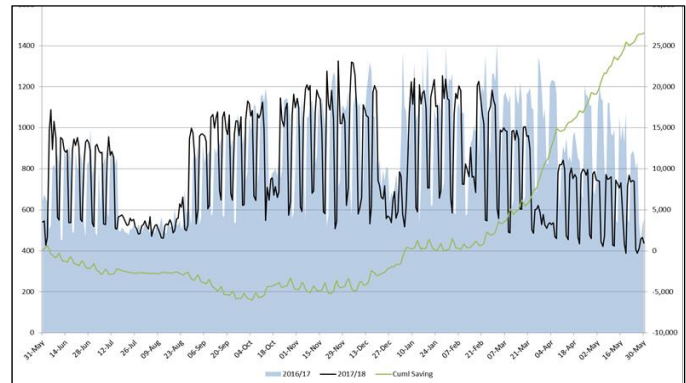
For more information please contact:
Lee Jowett
Schools Climate Emergency Fund Lead
 ✉ lee.jowett@leicester.gov.uk
 ☎ 0116 454 2271
 🌐 [Schools Extranet Website](#)

Dovelands Primary School



Annual pre-installation 164,737kWh
 Annual post-installation 143,828kWh, **13% reduction**

Mellor Primary School



Annual pre-installation 305,953kWh
 Annual post-installation 217,800kWh, **29% reduction**

Benefits

- Reduce costs and reduce carbon as part of your commitment to the climate emergency
- Interest free loan endorsed by Department for Education
- Payback made from savings from energy efficiency measures, you should never pay back more than you save
- Improved lighting and heating create better comfort for staff and students
- Significant reduction in maintenance costs and scaffolding when required
- Typical payback on LED lighting is 3-5 years

If you don't make changes now, those savings will never be realised