

being a **landscape architect**

what is **landscape**?



it's the countryside



its also in the city, the town, the village,



its down your street . . .

being a **landscape architect**



your school grounds



sports pitches & parks

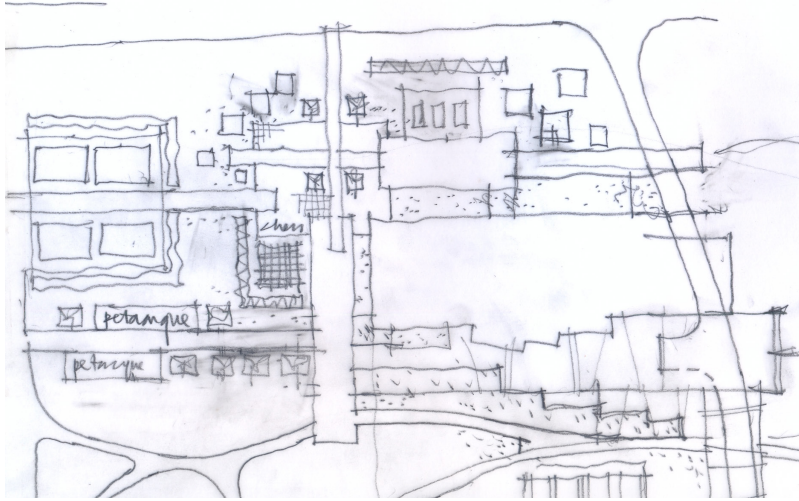


play areas

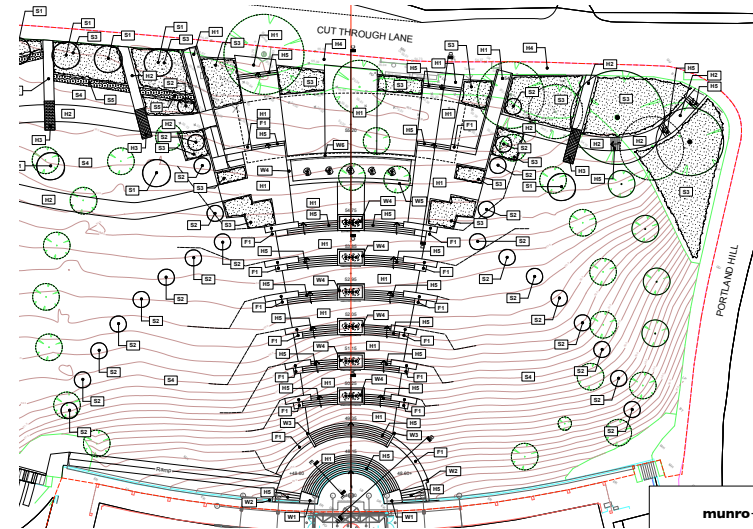


skateparks

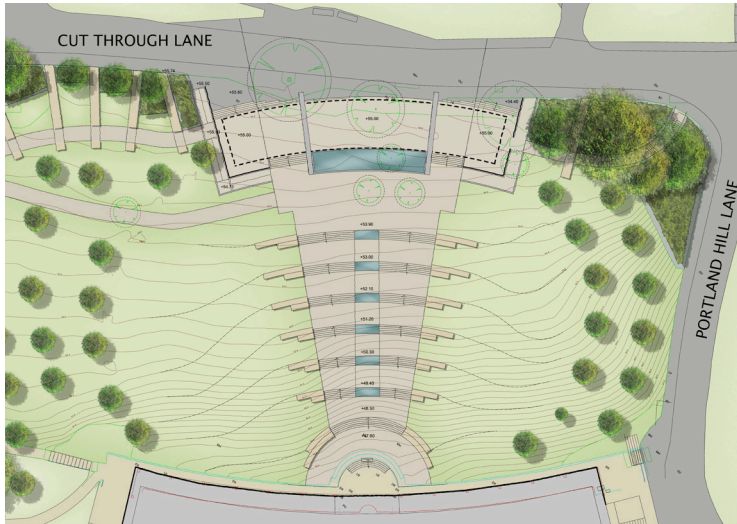
being a landscape architect



sketching



computer design



graphics



3D modelling

ART & IT SUBJECTS

being a **landscape architect**



soils & geology



environment

SCIENCE SUBJECTS



geography



plant biology

being a landscape architect



we talk to people to know what they want to do, to see and experience in the landscape



we consider the problem and the answers



then we draw plans of our designs

and images of how the design will look

being a **landscape architect**



we work with experts like **ecologists** who know all about habitats and wildlife



arboriculturists who know all about trees and woodlands



architects and engineers



and **builders** who help us to create the new landscapes

being a landscape architect



University courses

3 years leading to a BA or BSc

possible MA to follow

professional examinations after 2–3 years
in practice to become a

Chartered Landscape Architect

